



112,000 Lumens
Ultra-Bright LED
Illumination

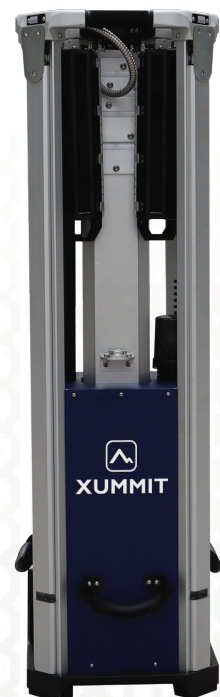


49kg/108pounds
Compact Portable
Design



2,200sqm/23,680sqf
Illumination
Coverage

The Makinex Sierra Light Tower is a compact, high-performance LED lighting solution designed for rapid deployment. Standing at 5 meters or 16.4 feet when fully extended, it delivers up to 112,000 lumens, effectively illuminating areas up to 2,200 square meters or 23.6k square feet. Weighing only 49 kg or 108 pounds and featuring a transport height of 1.2 meters or 3.9 feet, the Sierra is portable and can fit into standard vehicles, allowing for single-person setup. Its 360° fully rotational light heads provide versatile lighting configurations, while the electric mast ensures quick and effortless elevation. Engineered for durability, the Sierra operates silently and is built to withstand harsh environments, making it ideal for construction sites, events, and emergency situations.



IDEAL FOR:



**Construction
Sites**



**Emergency &
Disaster Response**



**Events &
Festivals**



**Roadwork &
Traffic Control**



**Security &
Surveillance**

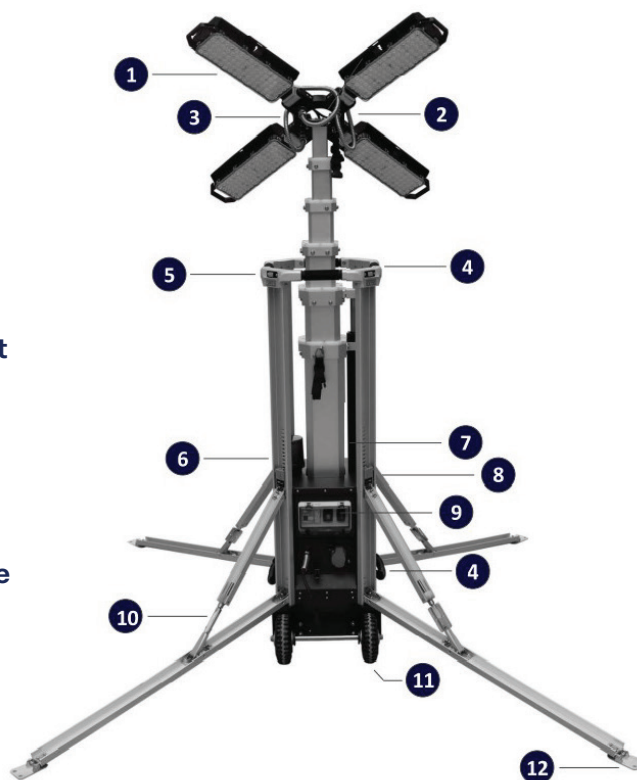


**Mining & Industrial
Applications**

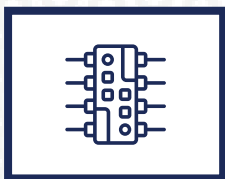
SPECIFICATIONS:

Model		Electrical	
Series	Sierra	IK class	IK08
Model No.	PLT-800	IP class	IP65 (lighting) / IP54 (chassi)
Performance		Noise Emissions	<5dB(A)
Illuminated Surface	2200 m ² / 23 681 ft ²	Physical	
System Power	800W	Fully extended height	5.1 meters/ 16.7ft
Luminous Flux	112,000 lm	Elevation system	Electric
Lumen/W	140	Mast Rotation	340
Beam Profile	60	Mobility	By hand/ Crane/
Color Temperature (CCT)	5000K	Dimensions (min.)	358 x 427 x 1200mm
Electrical		Dimensions (max.)	1640 x 1640 x 5100mm
Operating Voltage	100-305VAC/50Hz-60HZ	Weight PLT	49kg/ 108lb
Power Factor	>0.92	Wind Resistance	30 m/s / 67.1mph
Electrical Class	Class I	Housing Finish	UV stabilised powder coating
Protection	Over Voltage / Over Temp. / Short Circuit	Approvals	
Dimmable	Yes	Certifications	CE, ETL
Input Plug	CEE 230V/ NEMA/ Schuko	Service life L80 B50 (LED)	>100,000 h
Environmental			
Ambient Operating Temp. range		-30°C to +45°C -22°F to 113°F	
Storage Temp. Range		-40°C to +80°C -40°F to 176°F	

- 1 LED Luminaires
- 2 Top arm
- 3 Top Arm Rotation
- 4 Handles
- 5 Stabilizer Button
- 6 NEMA (Light Control) Socket
- 7 Bullseye Spirit Level
- 8 Stabilizer Lock
- 9 Control Panel
- 10 Stabilizer Adjustment Handle
- 11 Puncture Proof Wheels
- 12 Stabilizer Feet



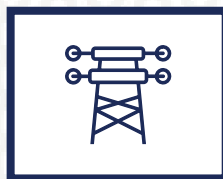
FEATURES:



1. 112,000 Lumen LED Output



2. 360° Rotational Light Heads



3. Electric Mast with 5m/16.4f Extension



4. Compact & Lightweight



5. Silent, Emission-Free Operation



6. Easy Single-Person Setup

